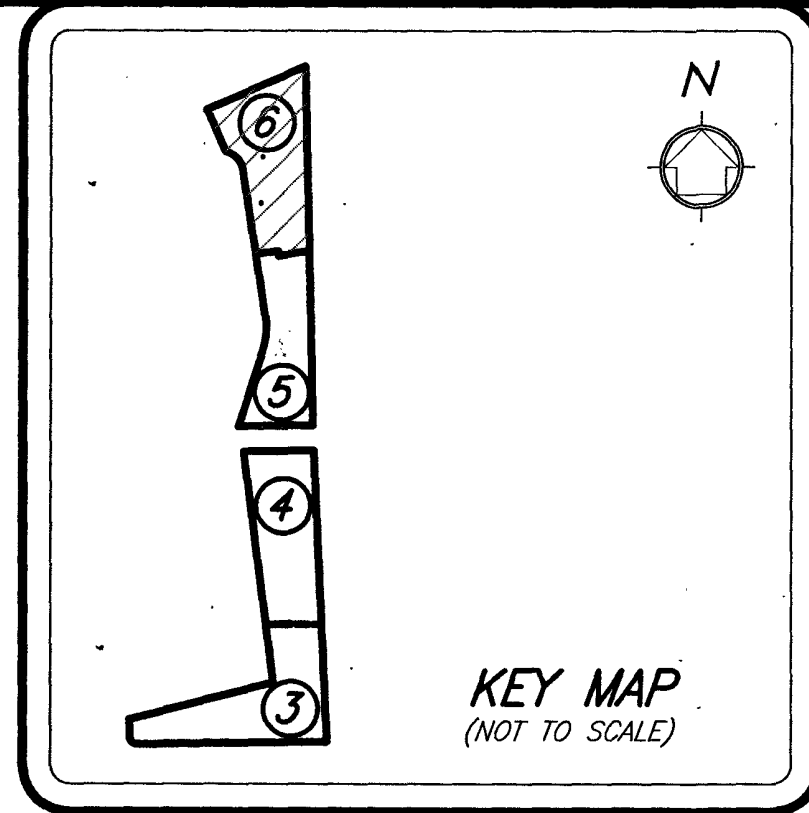


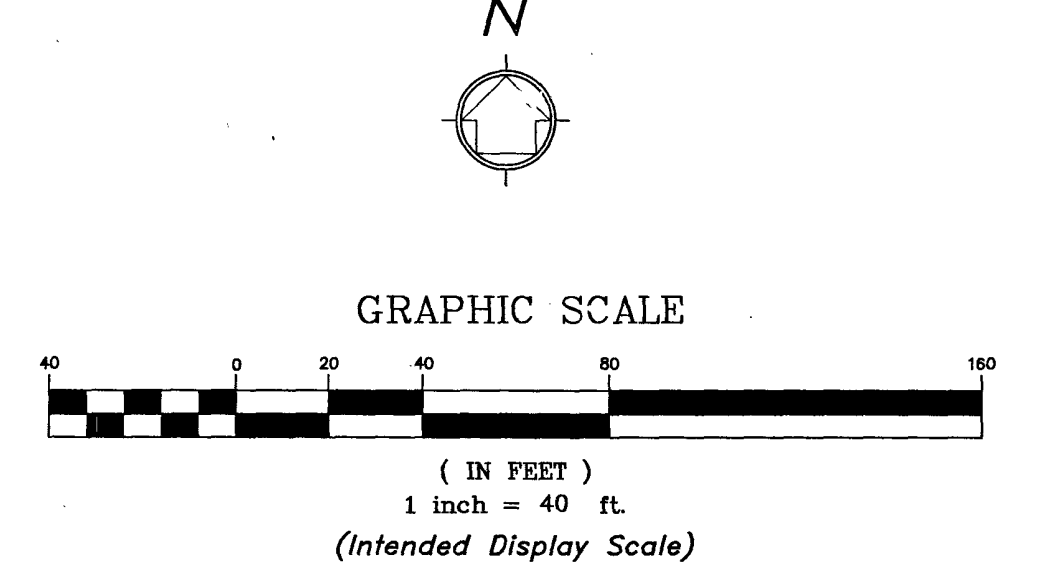
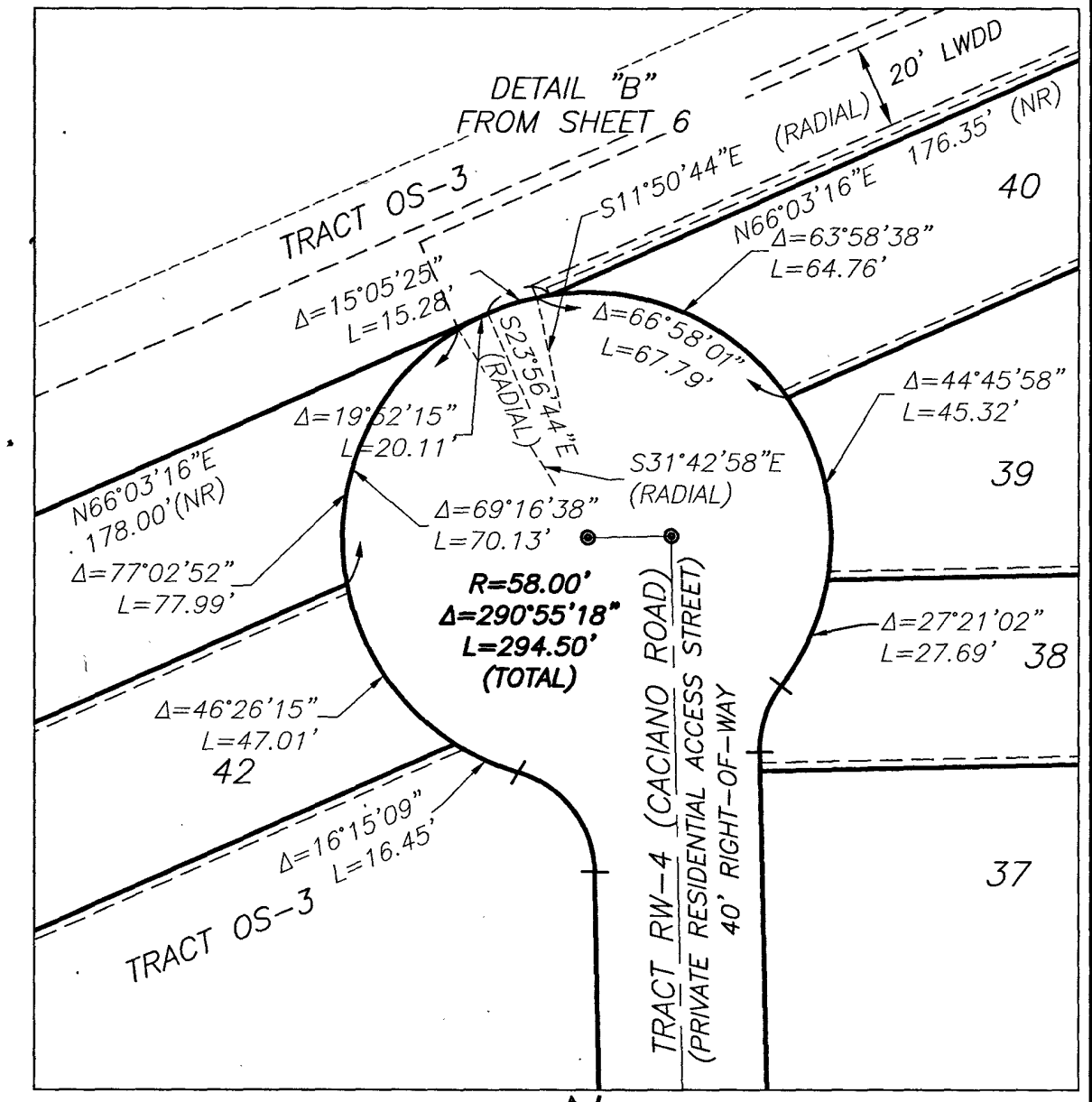
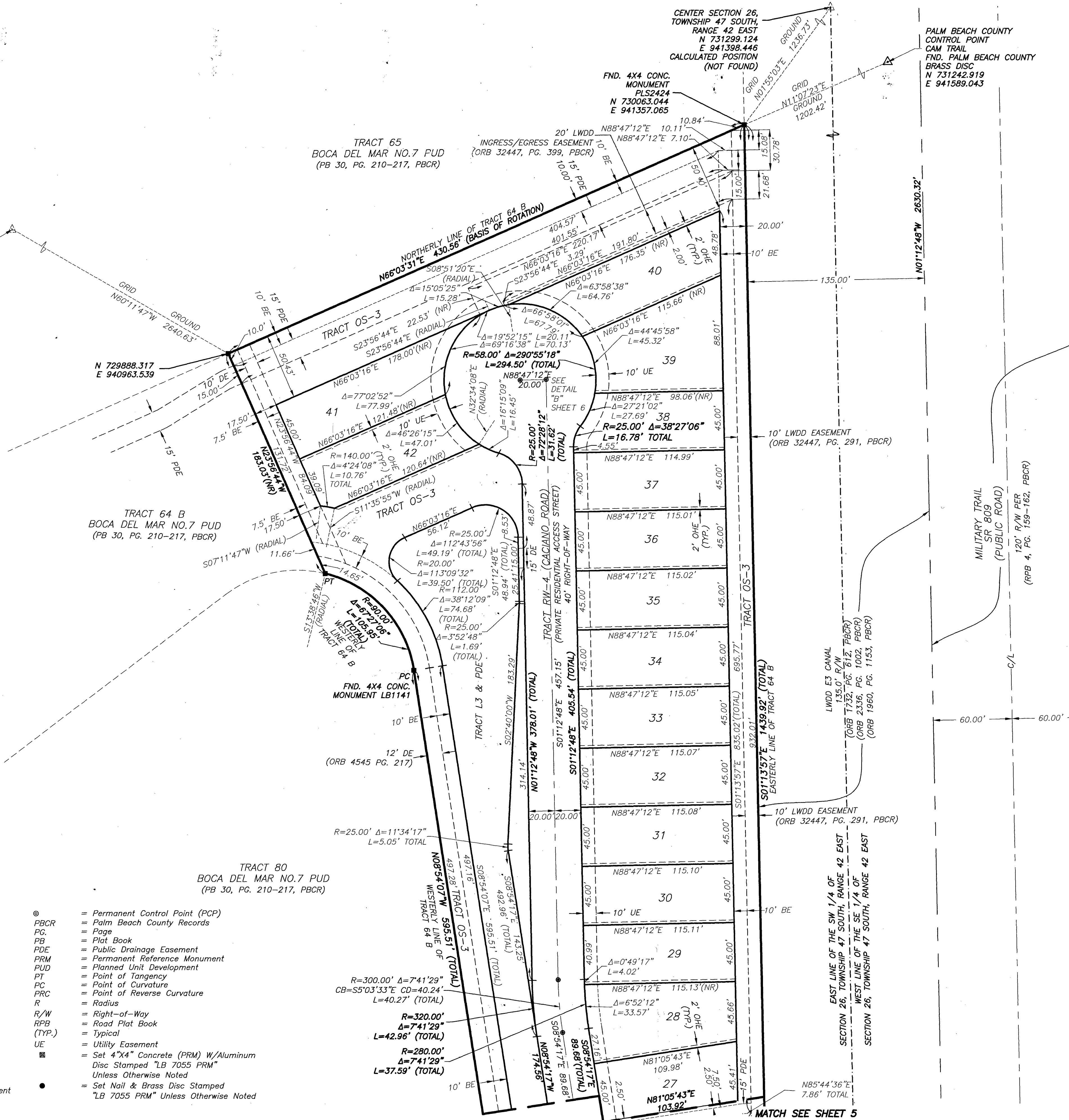
BOCA DEL MAR PUD - BRIDGEWATER COVE AT MIZNER VILLAGE

BEING A REPLAT OF A PORTION OF TRACT 64 B, BOCA DEL MAR NO. 7 PUD, PLAT BOOK 30, PAGES 210 THROUGH 217 INCLUSIVE OF THE PUBLIC RECORDS, PALM BEACH COUNTY, FLORIDA. LYING AND SITUATE IN SECTION 26 & 35, TOWNSHIP 47 SOUTH, RANGE 42 EAST, PALM BEACH COUNTY, FLORIDA.



90
SHEET 6 OF 6 SHEETS

PALM BEACH COUNTY CONTROL POINT PATIO
FND. PALM BEACH COUNTY BRASS DISC
N 731200.822
E 938672.101



LEGEND

- BE = Buffer
- C/L = Center Line
- CCR = Certified Corner Record
- CONC. = Concrete
- CB = Cord Bearing
- CD = Cord Distance
- Δ = Delta (Central Angle)
- DE = Drainage Easement
- FPL = Florida Power & Light
- FND. = Found
- LMAE = Lake Maintenance Access Easement
- LWDD = Lake Worth Drainage District
- L = Length of Arc
- LB = Licensed Business
- NAD = North American Datum
- NO. = Number
- NT = Non Tangent
- NR = Non Radial
- ORB = Official Records Book
- OHE = Maintenance and Roof Overhang Easement
- ⊙ = Permanent Control Point (PCP)
- PBCR = Palm Beach County Records
- PC = Page
- PB = Plat Book
- PDE = Public Drainage Easement
- PRM = Permanent Reference Monument
- PUD = Planned Unit Development
- PT = Point of Tangency
- PC = Point of Curvature
- PRC = Point of Reverse Curvature
- R = Radius
- R/W = Right-of-Way
- RWB = Road Plat Book
- (TYP.) = Typical
- UE = Utility Easement
- = Set 4"x4" Concrete (PRM) W/Aluminum Disc Stamped "LB 7055 PRM" Unless Otherwise Noted
- = Set Nail & Brass Disc Stamped "LB 7055 PRM" Unless Otherwise Noted

NOTE:

COORDINATES SHOWN ARE GRID COORDINATES
 DATUM - NAD 83 (1990 ADJUSTMENT)
 STATE PLANE FLORIDA EAST ZONE
 TRANSVERSE MERCATOR PROJECTION
 LINEAR UNIT = U.S. SURVEY FEET
 ALL DISTANCES ARE GROUND
 SCALE FACTOR = 1.000032176
 PLAT BEARING = GRID BEARING
 GROUND DISTANCE X SCALE FACTOR = GRID DISTANCE



2035 Vista Parkway, West Palm Beach, FL 33411
 Phone No. 866.909.2220 www.wginc.com
 Cert No. 6091 - LB No. 7055

THIS INSTRUMENT WAS PREPARED BY KELSEY M. SMITH, P.S.M., PROFESSIONAL SURVEYOR AND MAPPER, LICENSE NO. 7096 FOR THE FIRM: WGI, INC.